

Alarm output Setting

Alarm Output Port 1

Alarm Output Type

Alarm Duration(0-60) Second(s)

Enable in daytime

Enable in night

Default

save

AI analysis

Enable in daytime Disable

Enable in night Disable

display detection area box Disable

Draw detected targets Enable

detection area box blinks Disable

Sensitivity(0-100) 60

Human Car Moto

Electric Bicycle Bicycle

Alarm Output

Alarm Output Port 1 Disable

Audio action setting

Audio action enable Enable

Audio file /opt/ch/attention.mp3

Play times 1

Interval 0

Second(s)

Alarm Schedule

Day\Hour	0	1	2	3	4	5	6	7	8	9	10	11	12	13	14	15	16	17	18	19	20	21	22	23
Sunday	■	■	■	■	■	■	■	■	■	■	■	■	■	■	■	■	■	■	■	■	■	■	■	■
Monday	■	■	■	■	■	■	■	■	■	■	■	■	■	■	■	■	■	■	■	■	■	■	■	■
Tuesday	■	■	■	■	■	■	■	■	■	■	■	■	■	■	■	■	■	■	■	■	■	■	■	■
Wednes...	■	■	■	■	■	■	■	■	■	■	■	■	■	■	■	■	■	■	■	■	■	■	■	■
Thursday	■	■	■	■	■	■	■	■	■	■	■	■	■	■	■	■	■	■	■	■	■	■	■	■
Friday	■	■	■	■	■	■	■	■	■	■	■	■	■	■	■	■	■	■	■	■	■	■	■	■
Saturday	■	■	■	■	■	■	■	■	■	■	■	■	■	■	■	■	■	■	■	■	■	■	■	■

Click on the title bar on the left or above, or click on a single grid



Ethernet Setup

Ethernet Setup

MAC Address	<input type="text" value="F0:00:00:B5:B2:36"/>
DHCP Function	<input type="text" value="Disable"/>
IP Address	<input type="text" value="192.168.1.168"/>
Net Mask	<input type="text" value="255.255.255.0"/>
Gateway	<input type="text" value="192.168.1.1"/>
DNS1	<input type="text" value="202.96.134.133"/>
DNS2	<input type="text" value="8.8.8.8"/>
All subnet ONVIF	<input type="text" value="Enable"/>

save

IO Input Alarm

IO Input Alarm

Alarm Input Port

Input Alarm

Trigger Type

Alarm Time

Day\Hour	0	1	2	3	4	5	6	7	8	9	10	11	12	13	14	15	16	17	18	19	20	21	22	23
Sunday																								
Monday																								
Tuesday																								
Wednes...																								
Thursday																								
Friday																								
Saturday																								

Click on the title bar on the left or above, or click on a single grid

Alarm Output

Alarm Output Port 1

Audio action setting

Audio action enable

Audio file

Play times

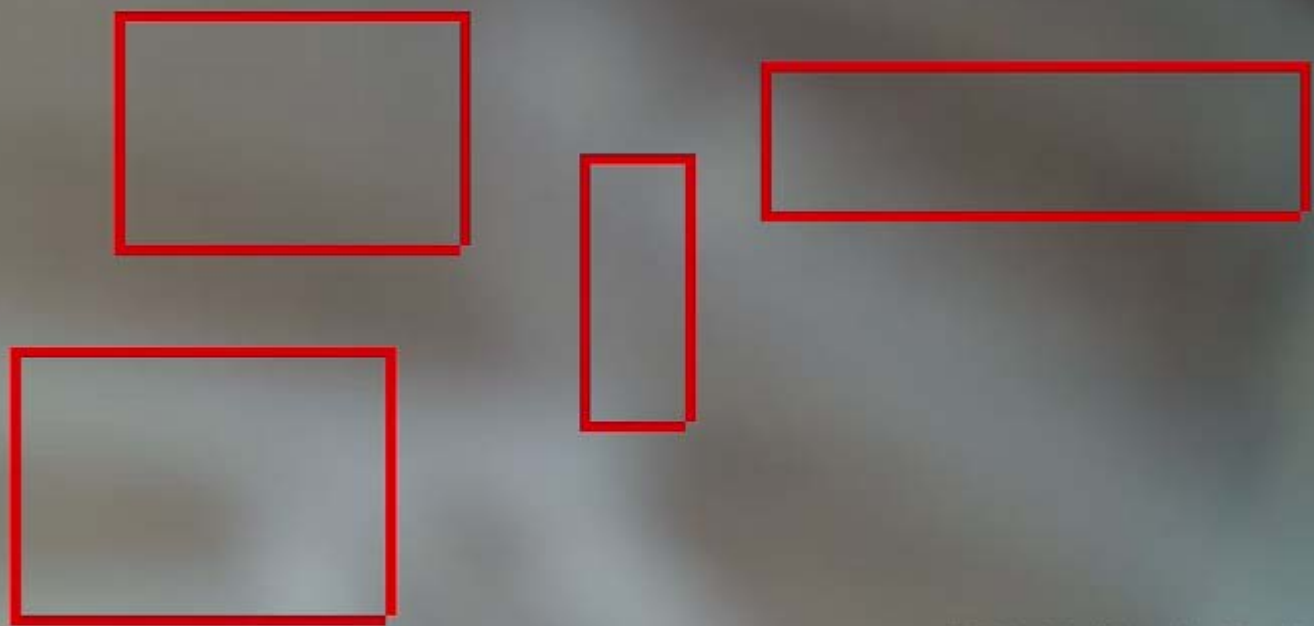
Interval

Second(s)

NetWork | Media | Storage | Alarm | System

Video Capture | Time and Title | Custom Title Settings | Video Encode | Audio Capture | Audio Encode | Privacy Mask | Media Info

Camera



2022-08-15 14:33:13

Clear

save

MediaStream Setup

RTSP

RTSP authentication	Enable
Media Access Port(554,1-65535)	554

WEB/ONVIF

ONVIF Protocol	Enable
ONVIF authentication	Disable
Http/Onvif Access Port(80,1-65535)	80

Control Protocol

Control Protocol	Enable
PTZ Control Port(8091,1-65535)	8091

HIK

HIK Protocol	Enable
HIK authentication	Disable
HIK Service Port	8000

Default

save

Motion Alarm

Motion Alarm:

Sensitivity(1-100):

Alarm Threshold(1-100):

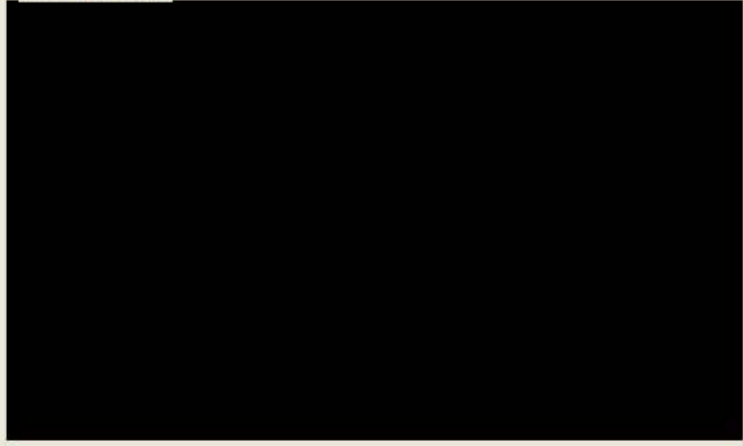
Block Count:

Enable Night Time:

Night Sensitivity(1-100):

Night Alarm Threshold(1-100):

Checking Area



Click:SET/UNSET; Drag from left:SET; Drag from right:UNSET

Alarm Schedule

Day\Hour	0	1	2	3	4	5	6	7	8	9	10	11	12	13	14	15	16	17	18	19	20	21	22	23
Sunday	■	■	■	■	■	■	■	■	■	■	■	■	■	■	■	■	■	■	■	■	■	■	■	■
Monday	■	■	■	■	■	■	■	■	■	■	■	■	■	■	■	■	■	■	■	■	■	■	■	■
Tuesday	■	■	■	■	■	■	■	■	■	■	■	■	■	■	■	■	■	■	■	■	■	■	■	■
Wednes...	■	■	■	■	■	■	■	■	■	■	■	■	■	■	■	■	■	■	■	■	■	■	■	■
Thursday	■	■	■	■	■	■	■	■	■	■	■	■	■	■	■	■	■	■	■	■	■	■	■	■
Friday	■	■	■	■	■	■	■	■	■	■	■	■	■	■	■	■	■	■	■	■	■	■	■	■
Saturday	■	■	■	■	■	■	■	■	■	■	■	■	■	■	■	■	■	■	■	■	■	■	■	■

Click on the title bar on the left or above, or click on a single grid

Alarm Output

Alarm Output Port 1:

Audio action setting

Audio action enable:

Audio file:

Play times:

Interval: Second(s)

Network Status

Wire Net

MAC Address	F0:00:00:B5:B2:36
IP Type	Static IP
IP Address	192.168.1.168
Gateway	192.168.1.1
Net Mask	255.255.255.0
DNS1	202.96.134.133
DNS2	8.8.8.8

Cloud Login Status

Enabled state	Enable
Cloud type	DANALE
Login Status	Online
Device Cloud ID	f50a3c2c6d928460d50d32f95337b631



Copy

save

P2P

Enable Cloud

Cloud type

save

IRCUt Mode

Keep color

Start time of Night

Light mode

Light Brightness Mode

Light Enviroment Brightness

Sensitivity(0-100)

End time of Night

Light Image option

Light Brightness

Turn off the lights Sensitivt(1-100)

Video Capture

Brightness(0-255)

Saturation(0-255)

Sharpness(0-255)

Contrast(0-255)

Backlight Control(0-255)

HLC(0-255)

denoise 2D(0-255)

denoise 3D(0-255)

Prevent overexposure face

AWB Mode

AWB Red Gain

AWB Green Gain

AWB Blue Gain

Video Format

Forced anti-flicker

Horizon Flip

Vertical Flip

defogging

defogging range



DRC Mode

WDR range

Daylight Shutter Mode

Day Shutter Speed 1/(10~10000)

Night Shutter Mode

Night Shutter Speed 1/(10~10000)

Video Mode

Video Encode

Video Encode

Main Stream

Sub Stream

Enabled state: Enable

Encode Format: H265

Resolution: 3MP

Bitrate Control: VBR

I Frame Interval: 80

Bitrate: Custom
2500

Frame Rate: 20

Custom QP: Disable

QP minimum: 30

QP maximum: 51

s(1-200)

kbps(512-3520)

Enabled state: Enable

Encode Format: H265

Resolution: 640X360

Bitrate Control: VBR

I Frame Interval: 80

Bitrate: Custom
500

Frame Rate: 20

Custom QP: Disable

QP minimum: 30

QP maximum: 51

s(1-200)

kbps(64-512)

Video Encode Advanced Parameter Setup

Profile: High Profile

Default

save

Main Stream

Sub Stream

Video Lost Alarm

Video Lost Alarm

Alarm Enable ▾

Alarm Output

Alarm Output Port 1 ▾

save